

Benefits for Individual Departments

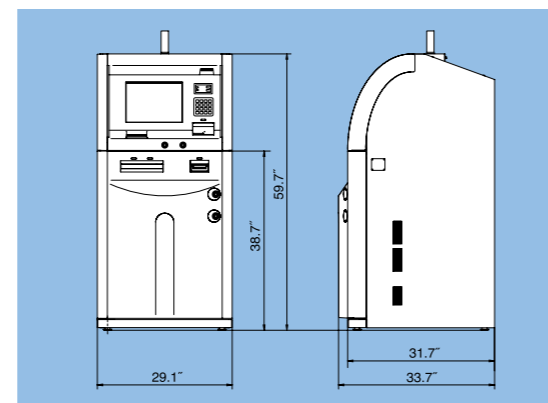
		CASINO				PATRON
		Slot dpt./ Cage dpt.	Accounting dpt.	Marketing dpt.	IT dpt.	
KIOSK	1	Faster transaction speed, ATM, Credit Card, Arriva Card & Debit Card	•		•	•
	2	More currency capacity (5 cassettes x 3,000 bills each)	•	•		
	3	Multiple ticket reader	•		•	•
	4	English/Spanish/Chinese on-screen display			•	•
	5	Bill-breaking function for pay-out of large-value ticket redemptions	•		•	•
	6	SK-100 database function (off-line function)	•			•
SERVER	7	Web function (simultaneous multi-department report monitoring)	•	•	•	•
	8	File export (Excel or CSV format)	•	•	•	•
	9	E-mail notification of change in kiosk status	•			•
	10	Supports Windows Active Directory	•	•		•
	11	Third-party clustering server system compatibility				•
	12	Data archiving and backup		•		•
	13	Remote access to the SK-100 from the server	•			•

CASINO KIOSK SK-100

Specifications

Dimensions	29.1" (W) x 33.7" (D) x 59.7" (H)
Weight	Approx. 762 lbs.
Bill Acceptor	JCM: 1,000 bills; MEI: 1,200 bills
Bill Dispenser	5 lockable cassettes \$1, \$5, \$10, \$20, \$100 3,000 bills/cassette (Depend on conditions of bills)
Coin Dispenser	3 Hoppers: €1, €5, €25 €25: 1,000 pcs.; €5: 1,250 pcs.; €1: 1,700 pcs.
Monitor	15" Color Touch Screen Monitor
Power Requirement	AC 120 V, 60 Hz; 3.0 A

Dimensions



* Specifications are subject to change without notice.
 * Please carefully read the instruction manual to ensure correct equipment usage.
 * Copyright © 2007 by GLORY LTD. All rights reserved.



GLORY (U.S.A.) INC.
<http://www.gloryusainc.com>
Corporate Headquarters
 10 York Avenue, West Caldwell, NJ 07006
 Tel: (800) 999-4510 / Fax: (973) 228-7114

Eastern Region
 10 York Avenue, West Caldwell, NJ 07006
 Tel: (800) 654-4564 / Fax: (973) 228-8796

Western Region
 11205 Knott Avenue, Cypress, CA 90630
 Tel: (800) 762-7824 / Fax: (800) 710-9803

Nevada Region
 2057 E. Maule Avenue, Las Vegas, NV 89119
 Tel: (888) 439-8262 / Fax: (702) 252-0645

Manufactured by
GLORY LTD.
<http://www.glory.co.jp/en>
 Akihabara UDX, 4-14-1 SotoKanda,
 Chiyoda-Ku, Tokyo 101-8977 Japan
 Tel: +81-3-5207-3110 / Fax: +81-3-5207-3030

Distributed by:



CASINO KIOSK SK-100
ATM CASINO KIOSK SK-100A



Eye-catching LED illumination attracts patrons to redemption kiosk.
Advanced Web Monitoring function improves management capabilities.
User-friendly ATM, ticket redemption and bill breaking casino kiosk.

Kiosk Functions

SK-100/100A Casino Kiosk

Enhanced speed, ease, convenience... Offering user-friendly one-stop services for ATM, ticket redemption and bill breaking, the SK-100/100A sets a new standard in casino kiosk performance.

Attractive appearance, easy operation

With its rounded design and eye-catching multicolor LED illumination, the SK-100/100A is a stylish addition to the casino decor. Operating tips are displayed on the big, bright, easy-to-see 15-inch touch screen. The BV/hopper section is positioned at a convenient height and features flickering lights that make it easy to find the insertion and dispense points. Casino patrons will appreciate the SK-100/100A's outstanding ease of use. Casino operators will appreciate its many advanced features.

Even higher transaction throughput than our previous model **1 3**

The SK-100/100A features a multiple-ticket pay-off function that can process up to 10 tickets at the same time. Combined with a 30% higher transaction speed than our previous model, this function reduces pay-out waiting time for patrons and lets the SK-100/100A efficiently serve a continuous flow of patrons.

Operation can be customized to suit specific needs **4 5**

When a minimum dispense count or partial bill breaking dispensing is set, the SK-100/100A greatly reduces the need for patrons to break bills after receiving pay-outs. The display language can be set to English, Spanish or Chinese. You can also customize the SK-100/100A to display casino-specific messages or information for patrons.

Greater bill holding capacity: five cassettes, 3,000 bills each **2**

Boasting the largest capacity in its class, the SK-100/100A minimizes the need to refill the bill cassettes during times when the casino floor is busy.

On-screen menu improves maintenance ease

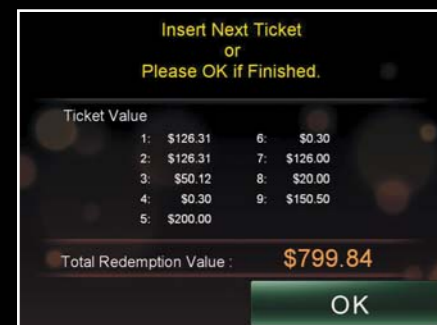
Instant Cassette ID Entry method helps operator to process drop/fill quickly and easily. Overall maintenance is easier thanks to an interactive screen with illustrations to guide the operator.

User-friendly ATM and ticket redemption interface capabilities

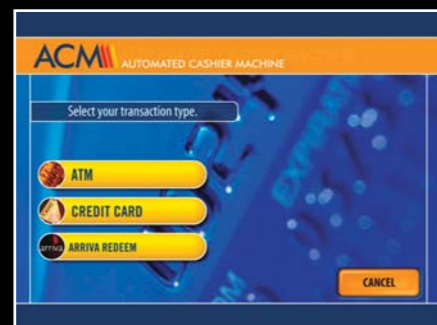
The GCA 3-in-1 enabled SK-100A casino kiosk is a multi-function, self-service unit that provides patrons easy and convenient access to conduct ATM transaction, ticket slot voucher for casino redemption and other related cash services.

Database in the SK-100/100A for system redundancy **6**

Because transactions are recorded and stored in a local database on the kiosk, the SK-100/100A can continue serving patrons even if communication with the server is interrupted. This prevents inconvenience to your patrons.



Multiple-ticket processing screen



ACM Transaction Type Screen



Maintenance guidance screen

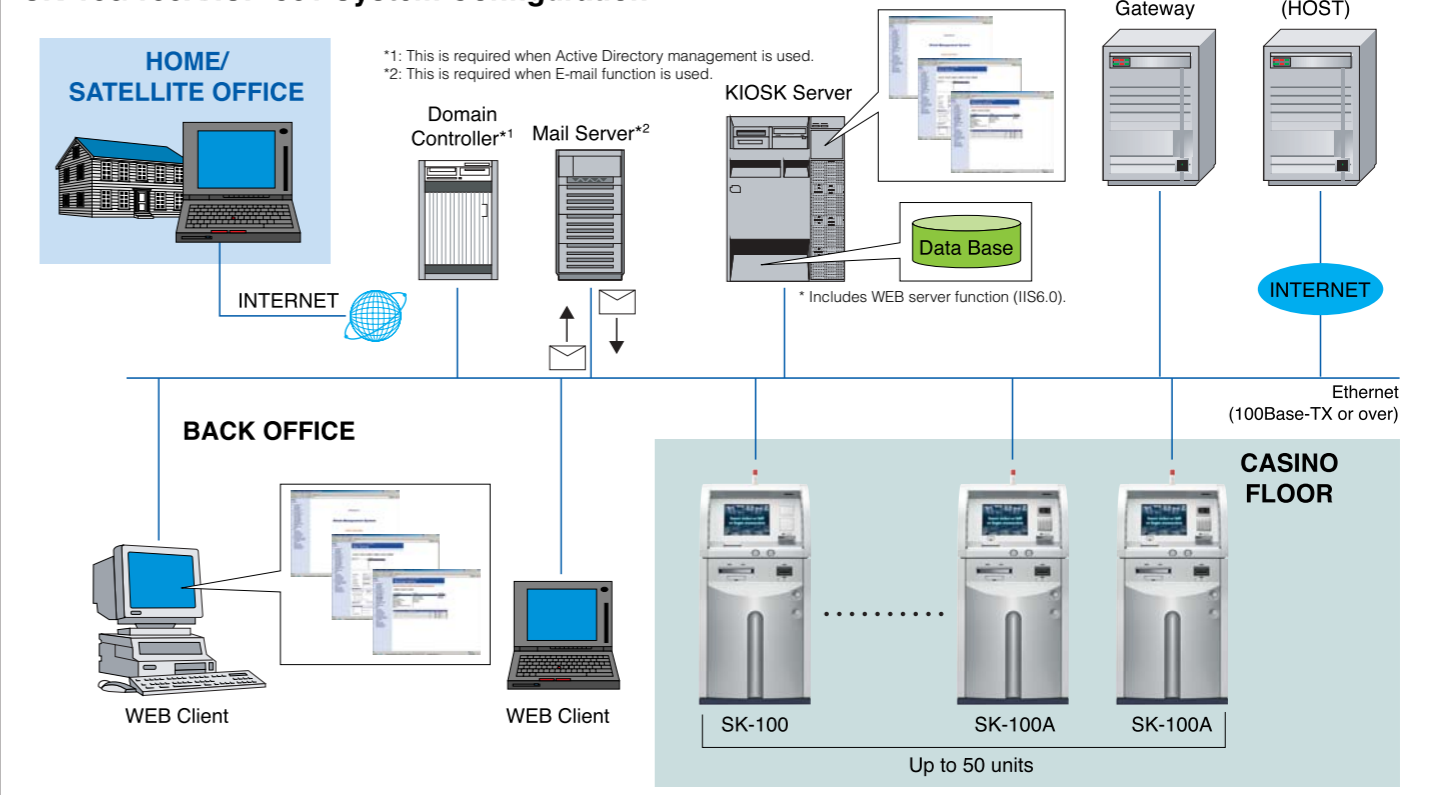
Server Functions

ISP-301 Glory Kiosk Management System

Real-time monitoring of machine activity and data acquisition. Enhanced management solutions accessed from the Web.

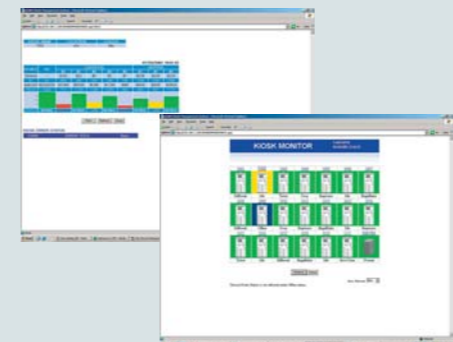


SK-100/100A/ISP-301 System Configuration



Web Monitoring **7**

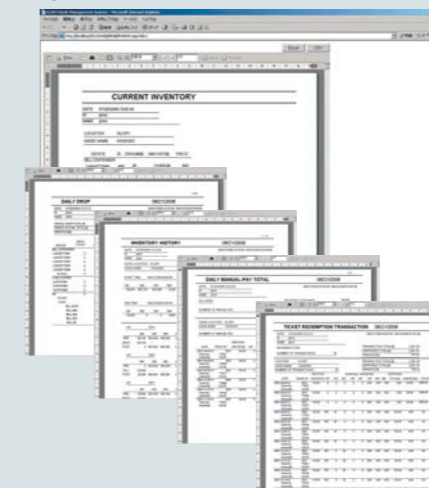
A Web browser allows anyone with accessing privileges to connect to the server via the Web. Icons displayed on the screen make it easy to monitor the status of all connected kiosks. Click on one of the icons, and the screen displays an easy-to-understand graph showing the number of tickets, bills and coins in the selected kiosk.



Regarding security risks in the distance operation of server Web applications
When accessing the Kiosk Management System from a distance via the Internet, the server must be open to the Internet. When the server is open to the Internet, there is an increased risk of data leaking or being altered by malicious users, unauthorized access to network computers, and virus infections. This application is to be used at the risk of the user, and robust security measures must be provided.

Report and File Export **8**

The SK-100/100A can output data in a variety of forms. A wide range of report formats are available and formulated for gaming and non-gaming transactions for easy and accurate reconciliation. In addition, report files can be exported to Excel or output in CSV format, making it easy for a casino to produce its own original report.



System Maintenance

Kiosk status information can be automatically e-mailed to a specified address **9**

Information on the status of connected kiosks — for example, when a bill cassette is empty — can be automatically e-mailed to a preset address. The person notified can then alert the casino staff so they can take prompt action.

Remote control of settings and functions **13**

From the server, you can control a variety of operations on any SK-100 unit connected to the system. Controllable operations and settings include shutdown, status change and server database connection.

Other Features

- The SK-100 supports Windows Active Directory. This lets you use accounts registered in Windows to set IDs and passwords. **10**
- Improved data archiving and backup function provides better data security. **12**

Clustering server system support **11**

The Kiosk Server supports third-party clustering servers. It also provides redundancy for improved data safety.

* Excel, Active Directory, and Windows are registered trademarks of Microsoft Corporation.